

DURALOCK

NORTH AMERICA

Performance Fencing



Boundaries without limits



Ascot Racecourse

The Market Leader in High Performance Equestrian Fencing

Established in 1991, Duralock has revolutionized equestrian rail and fencing systems by vastly improving safety conditions for horse, rider and spectators.

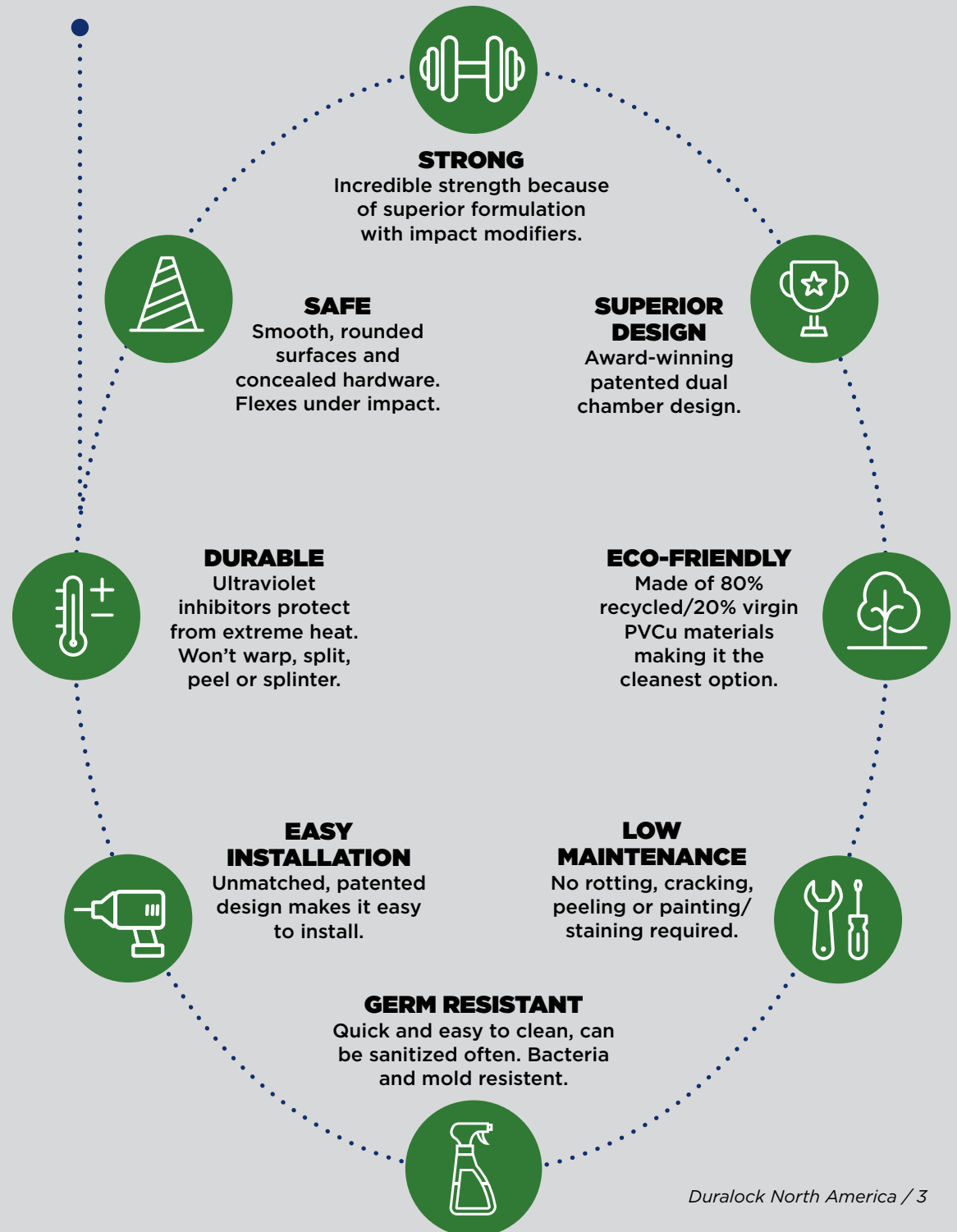
Our fencing systems have been installed in 33 countries at world-renowned racecourses, training centers, polo grounds and equestrian facilities.

All of our fencing has an award-winning, patented dual-chamber design and is suitable for use on all surfaces. The UV-stabilized PVCu formulations are of the highest quality, which eliminates the risk of shattering in all weather conditions. It is strong and durable, yet flexible in the event of a collision. The products are available as permanent or removable installations.

Duralock is a family-run company and manufactures the PVCu fencing systems in our private facility in Oxfordshire, England. The company is a member of the ASTM international testing body for fencing, which educates and enforces the need for safer quality systems.

Our team will work with you to design the best solution for your equestrian facility.

The Benefits of PVCu over traditional fencing



Race Rail



Cheltenham Racecourse

Horse racing is an intrinsically dangerous sport. Duralock's race rail is designed to minimize risk to horse and rider with smooth surfaces, rounded edges and snap fit T-connections. The rail bends out when brushed against at high speeds and cleanly breaks apart on impact. It is quickly and easily reassembled.

The rail may be installed permanently or used as a moveable system that can be swiftly reconfigured. The moveable feature is extremely useful when repositioning the turf rail and tracks have installed our permanent footings that make it simple to adjust the racing path.



Fair Hill Training Center © K. Rengert Photography



Ffos Las Racecourse



Canterbury Park © Coady Photography

Race Rail



Santa Anita Park

The race rail is available in oval and round configurations as well as a double midcourse rail. Slip rails are incorporated into designs to create gaps in the rail to allow for easy track access.



Duralock North America / 5



Dan Skelton Racing, Lodge Hill



Saratoga Race Course

Crowd Barriers

PERMANENT



Our crowd barriers are designed to guide and protect guests at your facility or event. The installations can be permanent or moveable and are available in several design styles.



Crowd Barriers

MOVEABLE



Ascot Racecourse



Moveable crowd barriers enable the facility to reconfigure for special events and crowd control.



Blenheim Horse Trials



Post and Rail



Olympic Games - London



The post and rail system is ideal for a variety of applications including arenas, paddocks, exercise rings, and sand rolls. It can be configured as both two, three and four rail fences.

Duralock North America / 8



Post and Rail



Al Wathba Stable

Duralock post and rail fencing has been utilized at prestigious equestrian events, including Olympic Games, Asian Games and Kentucky Three Day Event.



Asian Games - Guangzhou



Royal County of Berkshire Polo Club

Dressage Rail



World Equestrian Games - France



World Championships for Icelandic Horses - Berlin



World Equestrian Games - France



World Equestrian Games - France

Our single or dual dressage fencing is designed to fit FEI specifications. We provide your choice of concrete or pins to be placed on every other post for stability. Duralock fencing has been used in arenas hosting international dressage competitions.

Gates



Blackwood Stables



Ascot Racecourse

Duralock offers a wide variety of gates to compliment all of our fencing systems.



DURALOCK

NORTH AMERICA

Performance Fencing

www.duralock.com
sales@duralock.com

North America:
P.O. Box 5812
Louisville, KY 40255
502-221-3525

Company Headquarters:
6A Enstone Business Park
Enstone, Chipping Norton
Oxfordshire, OX7 4NP, England
+44 (0) 1608 678238